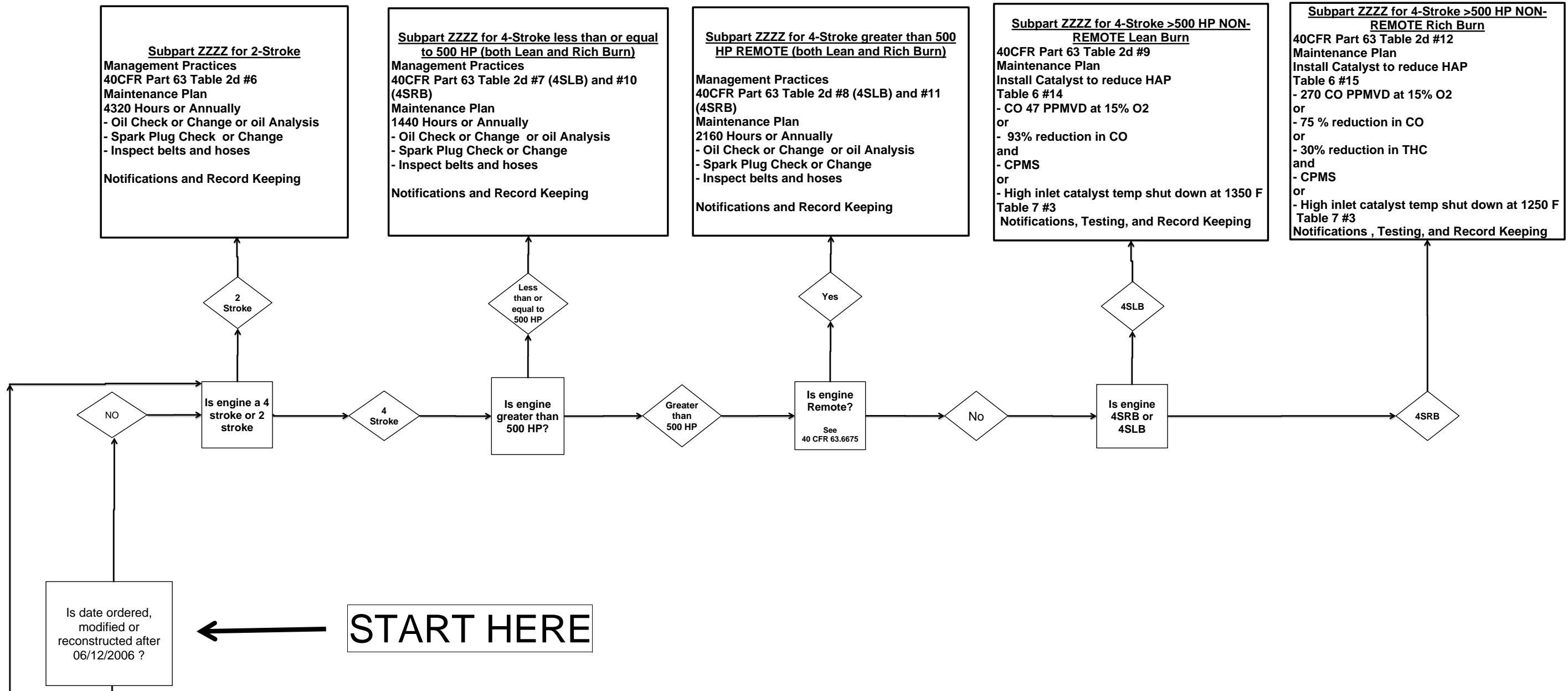




# Emissions requirements for Non-Emergency Spark Ignited (SI) Reciprocating Internal Combustion Engines (RICE) fueled by Natural Gas under NSPS and NESHAP

Revision: 4 - 10/18/1:

The Gas Compressor Association and its members and the Dallas Association of Credit Management, Inc., make no representations, warranties, or guarantees in connection with publication of these guidelines and hereby expressly disclaims any liability or responsibility for loss or damage resulting from its use or for any violation of federal, state or local regulations with which it may conflict.

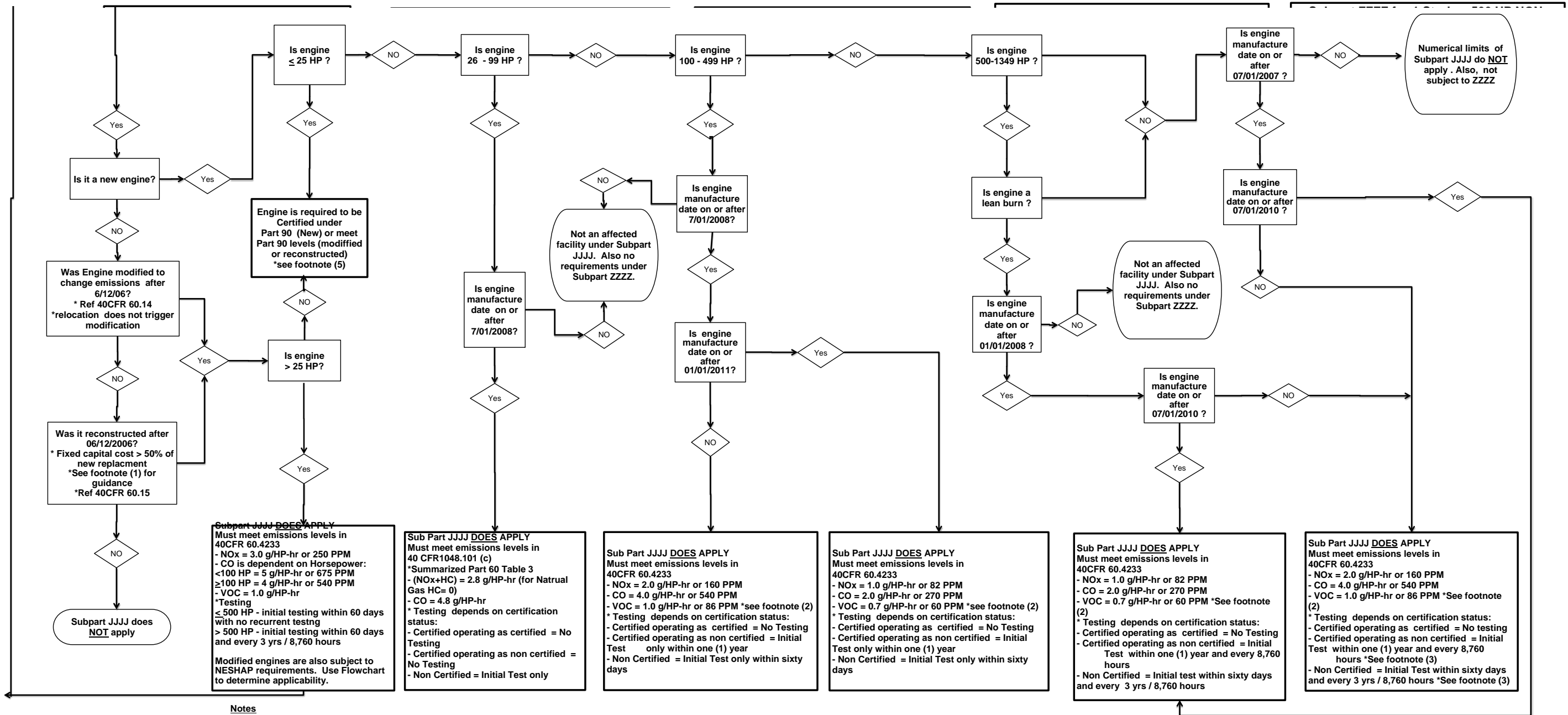




# Emissions requirements for Non-Emergency Spark Ignited (SI) Reciprocating Internal Combustion Engines (RICE) fueled by Natural Gas under NSPS and NESHAP

Revision: 4 - 10/18/1:

The Gas Compressor Association and its members and the Dallas Association of Credit Management, Inc., make no representations, warranties, or guarantees in connection with publication of these guidelines and hereby expressly disclaims any liability or responsibility for loss or damage resulting from its use or for any violation of federal, state or local regulations with which it may conflict.



**Notes**  
 (1) EPA cost Summary [www.epa.gov/ttn/catc/dir1/c\\_allchs.pdf](http://www.epa.gov/ttn/catc/dir1/c_allchs.pdf)  
 (2) VOC's do not include Methane (C1), Ethane (C2) and Formaldehyde  
 (3) NSPS engine equal to exactly 500 HP only requires initial testing within time frame specified, no recurrent testing is required.  
 (4) Emissions level requirements for PPM are based on 15% O2.  
 (5) Engines that are modified or reconstructed after 6/12/06 that are 25 HP or less must meet emissions levels of Part 90 but cannot be retroactively certified under Part 90